

# Aldrich Facility Rentals

---

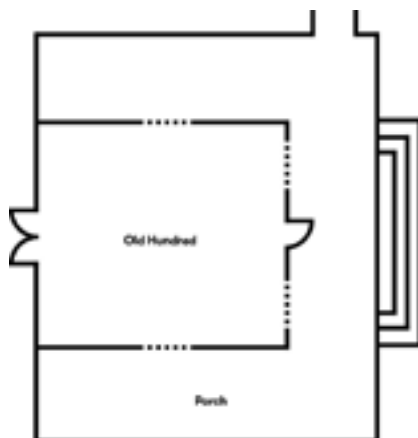
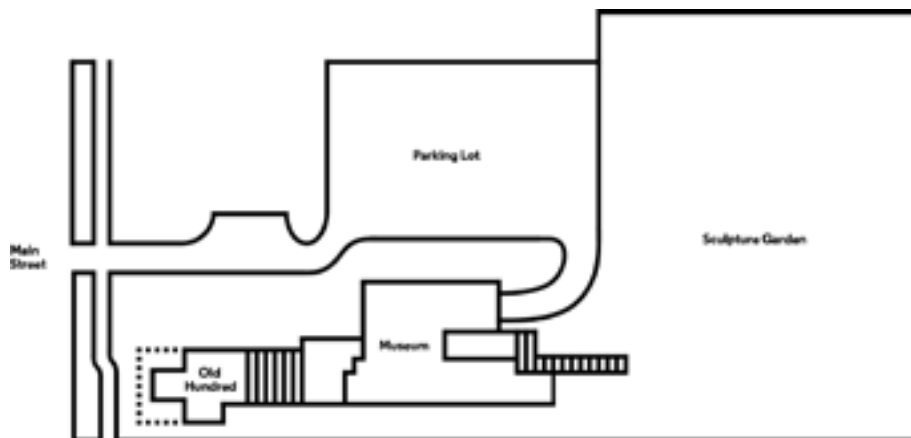
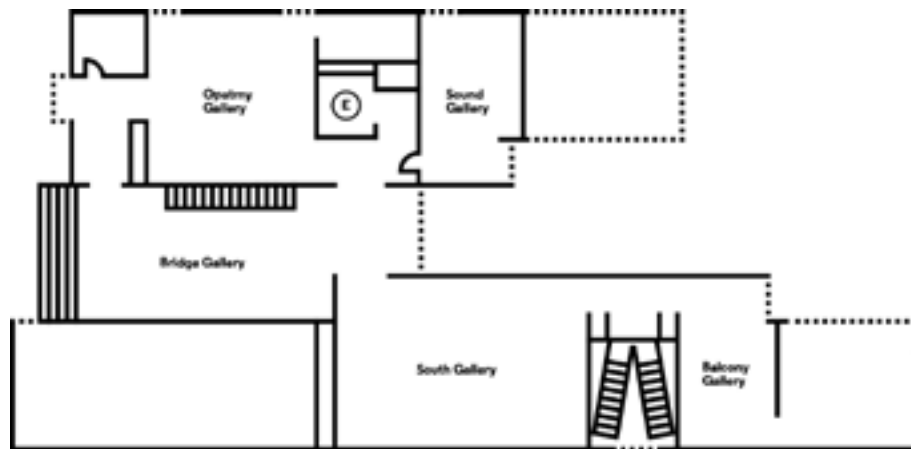
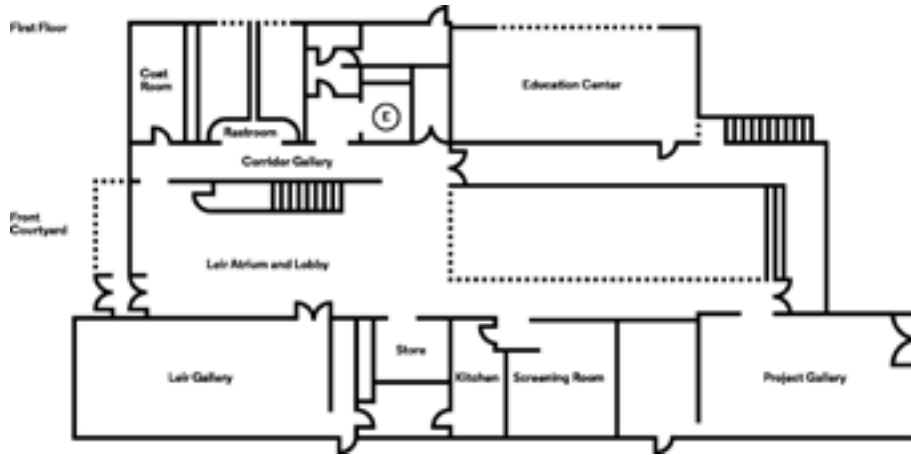
The Aldrich Contemporary Art Museum offers a unique setting for your corporate events and meetings. The frequently-changing exhibitions in our galleries provide an elegant backdrop to cocktail receptions, awards dinners, and annual meetings. Private exhibition tours with our professional museum guides are available for your event or clients. The Aldrich can provide a stage and chairs for a presentation or performance. Wireless Internet access is available throughout the building.

Our in-house event planner is ready to assist you with referrals and recommendations for your event. We work with a talented and creative group of professionals that provide catering, equipment rentals, and floral arrangements.\*\*

For more information contact Jamie Pearl at 203.438.4519 or [jpearl@aldrichart.org](mailto:jpearl@aldrichart.org)

**\*\*Museum-sponsored educational programs and co-sponsored events have first priority for Museum space use**

# Aldrich Museum Floor Plans



## **Leir Atrium and Lobby**

The lobby was designed as a seamless space that flows from the outside to the inside. The granite floor in the front outdoor courtyard continues through the lobby and extends out into the rear outdoor courtyard. The 21-foot-high floor-to-ceiling windows in the front and rear of the lobby create an illusion of limitless space.\*

### **Size Capacity**

**17.5' x 56' Reception: 200**

**\*Please note capacities may vary based on current exhibitions**

## **Front Courtyard**

The front courtyard is perfect for an outdoor reception, check-in location, or performance space. A terraced hill of grass-filled granite steps makes a natural seating area to accommodate gatherings of all sizes in our large courtyard. Proximity to the entrance allows people to easily move in and out of the Museum.\*

### **Size Capacity**

**49' x 30' Reception: 100**

**\*Please note capacities may vary based on current exhibitions**

## **Leir Gallery**

**This multipurpose space was specifically designed for multi-media exhibitions and to accommodate live performances. Its adaptability makes it the ideal space for a sit-down dinner, cocktail reception, presentation, or performance. The Leir Gallery has audio/visual capabilities, including an electronic projection screen (height 8' 9", width 11' 8"), projector, speakers, DVD player, and acoustic ceiling.\***

### **Size Capacity**

**22' x 48' Reception: 100 Dinner: 70**

**Presentation: 80-100**

**\*Please note capacities may vary based on current exhibitions**

## **Education Center**

**The Education Center has been designed as a cross between an artist's studio and a classroom, making it both a visually interesting and a practical space for corporate meetings or presentations. The Education Center is equipped with audio/visual capabilities, including an electronic projection screen (height 60", width 11' 8"), projector, DVD player, and VHS player, as well as a large-scale dry-erase board and multi-use surfaces for presentations and brainstorming sessions. The room is accessible from outdoor exhibition areas in addition to the main lobby.\***

### **Size Capacity**

**19' X 45.5' Reception: 100 Dinner: 40**

**Presentation: 75 Meeting with tables: 40**

**\*Please note capacities may vary based on current exhibitions**

## **Project Space**

The project space, with a 22-foot-high ceiling and floor-to-ceiling windows, is a dramatic location for a reception or sit-down dinner. A balcony overlooks the gallery and the windows frame the landscaped Sculpture Garden and its seasonally-changing exhibitions.\*

## **Size Capacity**

**22' X 41' Reception: 100 Dinner: 70**

**\*Please note capacities may vary based on current exhibitions**

## **Planning Your Event**

For more information on planning your corporate event at The Aldrich Contemporary Art Museum, please contact Jamie Pearl at 203.438.4519 or [jpearl@aldrichart.org](mailto:jpearl@aldrichart.org).

